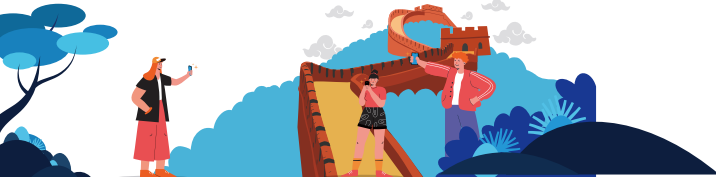




Extending Your Stay in China

If you need to apply for an extension of your stay in China after entering the country, please submit your application to the Immigration Management Department with the local Public Security Bureau at least 7 days before the expiration of your visa-free stay or the stay period specified on your visa. Ensure that you provide the required supporting documents as instructed.



Payment Methods in China



Exchange of Foreign Currencies

After entering the country, you can exchange foreign currencies for RMB cash at local bank branches, currency exchange booths and self-service machines at the port of entry. You may also withdraw RMB cash using international bank cards at ATMs.



Mobile Payment

Mobile payment is widely used in China and covers most daily consumption scenarios. You can download and install WeChat or Alipay APP and bind the APP with international bank cards with Mastercard, Visa and Discover logos or Chinese bank cards with the UnionPay logo.



TRAVEL TO CHINA ALL YOU NEED TO KNOW

Consulate General of the People's
Republic of China in Los Angeles
January 2025



Preparation



Visa-Free Transit

China has been optimizing the visa-free transit policy. If transiting from a designated port in China to a third country (region), citizens of the U.S. and other eligible countries are exempt from visa application when staying in designated areas. During their stay, they are permitted to engage in short-term activities, including tourism, business, visits, and family reunion. More visa facilitation policies are available such as visa-free entry policy for foreign tourist groups travelling by cruise ships and Visa-Free Entry to Hainan.



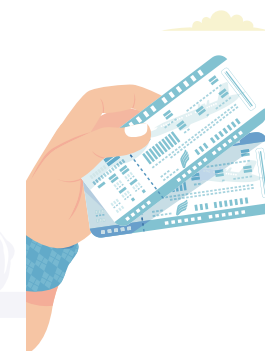
Visa Application

If you do not qualify for the visa-free policies mentioned above, please apply for a visa at a Chinese Embassy or Consulate.



Flights to China

Currently, over 90 direct flights operate weekly between mainland China and the United States. Destinations include cities such as Beijing, Shanghai, Chongqing, Guangzhou, Los Angeles, San Francisco and Seattle. Airlines such as Air China, China Southern Airlines, China Eastern Airlines, Sichuan Airlines, Xiamen Air and United Airlines offer direct flights from Los Angeles to China's major cities like Beijing and Shanghai.



Transportation

Navigation Apps

Amap (Gaode Maps) and Baidu Maps are commonly used in China.



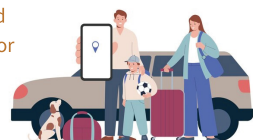
Urban Transportation

****Metro**** You may purchase tickets directly at self-service ticket machines in stations or present your payment QR code on mobile apps like Alipay or WeChat Pay at fare gates.

****Buses**** Urban bus systems are well-developed, and payments can be made with local transit cards or mobile apps like Alipay and WeChat Pay.

****Taxis and Ride-Hailing**** Taxis are widely available and it is recommended to use the meter to calculate the fare. Apps like Didi and Amap support English interfaces and are similar to Uber.

****Shared Bicycles**** Riding shared bicycles, a low-carbon way of transportation, is highly recommended for short-distance travel within the city. You can choose a shared bicycle, download its app like Meituan or Alipay, and scan the QR code to start your ride.



Intercity Transportation

****High-Speed Rail****

Tickets can be purchased with a passport on the 12306 China Railway official website, at station counters, or self-service machines with your passport.



****Domestic Flights****

Tickets can be booked via airline apps, mini-programs, or at airport counters.

****Car Rentals****

You can rent cars at international airports and downtown locations. You can also use car rental apps or car rental mini programs on Alipay or WeChat. Foreign driver's license is NOT effective in China.

Short-term visitors can apply for a temporary Chinese driver's permit, while long-term visitors can apply for a Chinese driver's license with their foreign driver's license. More details can be reached out through local Vehicle Management Department.

Hotels

Major chain hotels in Chinese cities are available to be booked via platforms like Booking or Trip.com, or through official Chinese hotel booking websites/APPs. Confirmation with hotels regarding payment options and reception are advised. Passport or other valid IDs are required for checking-in.



Internet Access



Before departure, international roaming services are recommended to be activated while staying in China. After entering China, applying for a SIM card with your passport at branches of local Telecom companies would also be recommended.

Free Wi-Fi is available in public areas like shopping malls, airports, stations, parks, and hotels.



China Mobile



China unicom



China Telecom

Tour

Attractions

You can join organized tours through agencies or explore on your own. Tickets for most attractions are available on their official websites or mini-programs on WeChat or Alipay. Alternatively, tickets can also be purchased on-site with valid travel documents. Reservation is required for popular attractions such as the Forbidden City and the National Museum.



Dining

You may search for popular restaurants on navigation APPs or platforms like Dianping (similar to Yelp) or WeChat/Alipay mini-programs. Most restaurants in China offer both dine-in and delivery services. If you choose to dine in, tipping is generally unnecessary. For delivery, platforms like Meituan or Ele.me (similar to DoorDash/UberEats) are available.



Dianping
(similar to Yelp)



WeChat



Alipay



Meituan



Ele.me

Shopping

In China, the prices of most goods and services typically already include all applicable taxes, so there is no need to calculate or pay additional taxes at checkout.



Healthcare

Both public and private healthcare facilities are available, with equal fee standards for foreign visitors and local residents. Medical insurance in advance, based on your personal itinerary, is recommended.



Emergency

In case of emergencies in China

110 for police

120 for medical emergencies

119 for fire assistance

